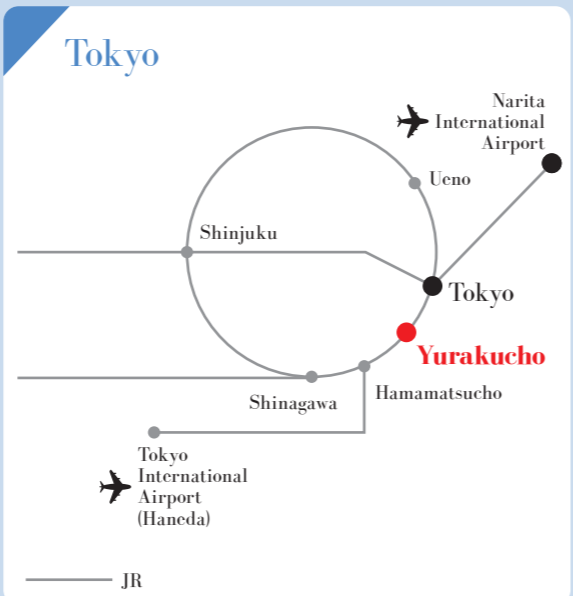
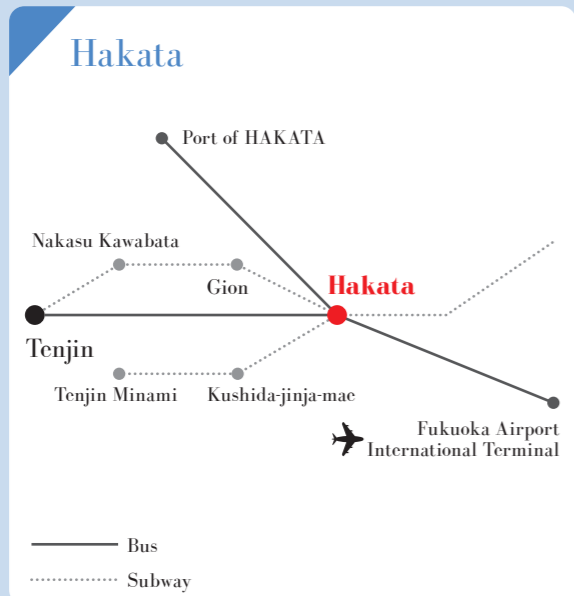
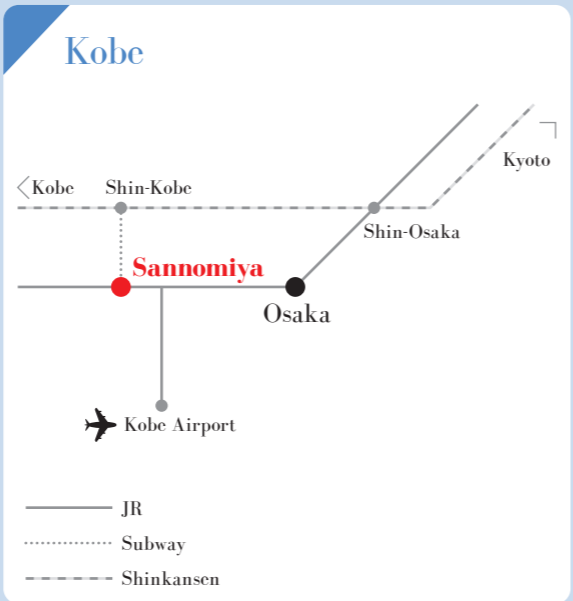
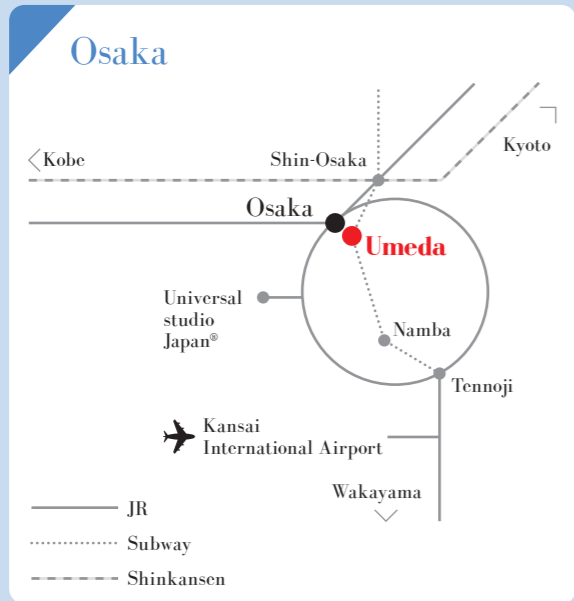




Maps








Hankyu Umeda Main Store




Hankyu Men's Osaka




Hanshin Umeda Main Store




# Hankyu Hanshin department stores


[English]




Kobe Hankyu



Hankyu Men's Tokyo



Hakata Hankyu



Hankyu Men's Tokyo

# About Hankyu Hanshin Department Stores

Hankyu Department Store was the world's first department store directly connected to a railway station. Hanshin Department Store traces its roots back to Hanshin Mart, established as part of the Hanshin Electric Railway business. In 2007, these two pioneering retailers—both born from railway companies—joined forces to create Hankyu Hanshin Department Stores, Inc.



# Service Guide

## Foreign Customer Service

### Tax Refund



Tax-refund services are provided at the dedicated counter in each store.

### GUEST COUPON



Customers eligible for tax-free shopping can enjoy a 5% special discount on purchases. The 5% discount will be applied directly when paying by UnionPay, WeChat Pay, or Alipay.

## Overseas Customer VIP Club



Customers who have spent a total of 1 million yen or more (tax-excluded, after all discounts) on tax-refund purchases within the last 12 months are eligible to join the Overseas Customer VIP Club.

### Member Benefits

- ① Silver Card Membership: 7% Discount on eligible items  
Eligibility: Cumulative tax-refund purchases of 1 million yen or more (tax-excluded, after discounts) within the last 12 months.
- ② Gold Card Membership: 10% Discount on eligible items  
Eligibility: Silver Card members who reach a cumulative purchase total of 5 million yen or more (tax-excluded, after discounts).

\*Certain products and brands are excluded from these discounts.



# Hankyu Department Store Umeda Main Store



## Experience an exciting and wonderful shopping journey at Hankyu Umeda Main Store

As a landmark in Umeda, Hankyu Umeda Main Store boasts a wide array of world-renowned luxury fashion brands, cutting-edge fashion trends, and beauty and cosmetics section. You can also indulge in sweets and delicious treats from all over Japan, from the latest trends to classic favorites.



Address: 8-7, Kakuda-cho, Kita-ku, Osaka, Japan  
 Tel.: + 81 (0)6-6361-1381  
 Opening Hours: 10:00 a.m. ~ 8:00 p.m.  
 12th & 13th Floor Restaurants: 11:00 a.m. ~ 10:00 p.m.  
 \*The hours are subject to change.

Access  
 2-minute walk from Hankyu Osaka-Umeda Station, JR Osaka Station,  
 Osaka Metro Midosuji Line Umeda Station, or Osaka Metro  
 Tanimachi Line Higashi-Umeda Station

Official Website



## WOMEN'S FASHION

From the trend-conscious youth to the sophisticated woman. We propose styling that incorporates a wide range of fashion items, from trend to classics. In addition, we have a wide lineup of items such as the lingerie shop "MAISON DE LINGERIE" selected from Japan and overseas, "THE DRESSING MAISON" that stock party dresses and formal wear.



## MODE



We offer a lineup of the latest fashions from the world's top brands and up-and-coming brands from Japan and abroad.

D-LAB: Offering cutting-edge fashion and trend brands, the store offers a wide range of free styling.



## BEYOND WORLD

You can immerse yourself in the worldview of brands from domestic and international street brands to creator brands. There will also be Event Space that will meet the diverse needs of the next generation with cutting-edge content.

March 20, 2026 "HANKYU LUXURY" RENEWAL OPEN

# INTERNATIONAL LUXURY FASHION

We proudly bring together globally acclaimed, authentic luxury brands—expanding our offerings from fashion to home collections. Our lineup includes distinguished names such as Kondaya Genbei, a venerable obi maker from Kyoto's Muromachi district with over 280 years of heritage, and L'Etrange, the celebrated Parisian leather brand making its Japan debut.



Max Mara



Kondaya Genbei Inc.

# JEWELRY

Our lineup features top global jewelers and renowned brands, including famous Japanese brand Mikimoto. You'll find a collection of masterpieces having both contemporary sensibilities and exceptional craftsmanship in two elegant floors.



Chaumet



# WATCHES

Featuring a wide range of watches from both domestic and international brands such as Grand Seiko and Rolex, we offer intricate timepieces, high-end watches adorned with jewelry, and glamorous ladies' watches—the largest selection in Western Japan. Our maintenance workshop, staffed by skilled artisans, provides a firsthand view of world-class craftsmanship.



Breguet



Blancpain



OMEGA

BAOBAO



VALEXTRA

# FASHION ACCESSORIES



Explore a wide-ranging collection of jewelry, accessories, bags, and shoes from top domestic and international brands. In addition to an extensive selection of designer accessories and lifestyle goods, our Bag Gallery showcases the latest trending brands. We stock a wide variety of shoes from Japan and around the world, from premium designer shoes to creative sneakers by Japanese and international creators.



CA4LA



Vendome Aoyama

# COSMETICS



We offer over 80 premium brands, from skincare and makeup to fragrances and the latest beauty devices. As one of Japan's largest cosmetics departments, HANKYU BEAUTY features exclusive and pre-release items, along with beauty events to help every guest look and feel their best.



Clé de Peau Beauté



SHISEIDO



# JAPAN MADE

We offer items that embody the skill and craftsmanship of Japan's top artisans, also regarded as the most high quality in the world. We highly recommend traditional Japanese crafts such as Edo Kiriko glassware which allow you to experience Japan's rich heritage.



Edo Kiriko



Nousaku



Yamada Heiando



Yamada Heiando



Kaikado



Hyozaemon



YOKU MOKU



KANOU SHOUJUAN



Isshindo



Japanese Sake



HIBIKA



Minokichi - Kyoto Cuisine

# RESTAURANT

On our 12th and 13th floors, you can find approximately 30 restaurants in our Shukusai Dining area. You can also savor the flavors of Japan with sushi, unagi, and tempura, or explore international cuisines such as Chinese, Korean, and Italian. Take a break from shopping and enjoy a cup of coffee or tea at one of the cafes located on each floor.



Gion Yasaka Endo  
Kyoto-Style Tempura



Tanpei Sushi



All Star Dining



Kushinobo



Japanese-Style  
Barbecue Matsuya



# FOOD

Step into our two-floor food market and discover a treasure trove curated by expert buyers. From fresh produce to a diverse array of Japanese, Western, and Chinese cuisine, as well as premium teas and a selection of local and international spirits, we have something to satisfy every craving. In the confectionery area, you'll find popular confectionery shops from both domestic and international brands, as well as longstanding Japanese sweet shops. Hankyu's original sweets and collaborative products with major food manufacturers are also popular choices for souvenirs from Osaka.



TOKYO TULIP ROSE



Tsujirihei Honten



Shinjuku Takano



Sugar Butter Tree



Unaman



Tonkatsu Honkatsuki

# Kobe Hankyu



## Enjoy an Elegant Shopping Experience in the Cosmopolitan Charm of Kobe

Kobe is a refined port city where international culture thrives. Blessed with both sea and mountain landscapes, it exudes a stylish, cosmopolitan atmosphere that enchants visitors from around the world. The city offers a rich variety of attractions—from scenic strolls and delights to night views, the Kitano Ijinkan district, and the Arima Onsen hot springs. Kobe Hankyu is a sophisticated shopping spot where you can find the latest fashion trends and world-famous luxury brands. Conveniently located near the city center, Kobe Hankyu welcomes you to a premium, exciting, and effortlessly enjoyable shopping journey.



Address: 8-1-8 Onoedori, Chuo-ku, Kobe, Hyogo, Japan  
 Tel.: +81 (0)78-221-4181  
 Hours: 10:00 a.m. ~ 8:00 p.m.  
 \* The hours are subject to change.

Access  
 3-minute walk from Hanshin Kobe-Sannomiya Station, 5-minute walk from JR Sannomiya Station or Hankyu Kobe-Sannomiya Station, 7-minute walk from Kobe Municipal Subway Sannomiya station

Official Website



BE KOBE monument



Kobe Port Tower

## Fashion (Kobe Elegant Style)



Inspired by the culture of being Europe's gateway, Kobe has created a sophisticated and stylish lifestyle. Our selection includes elegant fashion items, tableware, art, and flowers.



Tournage

## Hankyu Mode Kobe

We offer a Kobe-style mode that blends apparel with cafés.



NOSE SHOP

AMOUAGE GOLD

KEITA MARUYAMA

# Peanuts LIFE & TIMES

The Official PEANUTS Shop—A Hankyu Department Store Original  
Through Snoopy and his beloved friends, we invite you to embrace a lifestyle where everyday moments feel like little joyful events.



Chocolat Republic



Juchheim



PATISSERIE TOOTH TOOTH



FREUNDLIEB



Shinjuku Takano



Baton d'or

## FOOD

A wide selection of Kobe's iconic specialties nurtured by its history—from Kobe beef and sake brewed in the Nada district to delightful sweets that originated in Kobe.



Kobe Beef



Piroshki



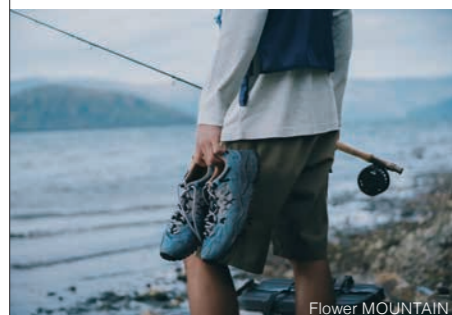
Barbour

## @TRUNK Supported by CREW THE CAMP

A curated select shop featuring outdoor-themed apparel and gear, offering a lineup so inspiring, it'll make you want to pack your bags and head out on your next adventure.



SEAGREEN



Flower MOUNTAIN



Hyogo gokoku Sake



# Hakata Hankyu



## A Gourmet and Shopping Experience at the Gateway to Kyushu

A captivating city where traditional culture meets the latest trends. Not only can you enjoy delicious cuisine with ease, but the city also offers a variety of attractions—from historic sites like Dazaifu Tenmangu Shrine to modern landmarks such as Fukuoka Tower. Hakata Hankyu is located at the gateway to Kyushu, boasting unbeatable access with a direct connection to JR Hakata Station. In addition to premium fashion and cosmetics, the basement food floor offers a rich selection of Hakata's famous sweets and local souvenirs, making Hakata Hankyu the ideal destination for all your shopping needs.



Address: 1-1 Hakataeki-chuogai, Hakata-ku, Fukuoka, Japan  
 Tel.: +81 (0)92-461-1381  
 Opening Hours: 10:00 a.m. ~ 8:00 p.m.  
 \* The hours are subject to change.

Access  
 1-minute walk from JR Hakata Station ticket gate

Official Website



Fukuoka Tower



Nakasu food stalls



MIKHOUSE



TripTrap

## Hakata Hankyu LIFESTYLE

On the 7th floor, you'll find a wide range of living essentials, along with baby and children's goods designed to enrich everyday life. The 8th floor features Yutorie—a dynamic event space showcasing trending items and experiences from across Japan—as well as selections in wellness & sports, travel bags, accessories, eyewear, and more.



Chacott



# FASHION & FASHION ACCESSORIES

A carefully curated selection of popular Japanese brands that captivate women of all ages—from young to mature. From apparel to shoes, bags, and accessories, explore a full lineup of items to complete your look.



# JEWELRY & ACCESSORIES

We carry a wide range of products, from Japanese accessory brands loved by international visitors to designer jewelry and world-renowned boutiques.



agele



DAVAN



FAS



SK-II



POLA

# COSMETICS

On the 1st floor, you'll find a dazzling array of around 40 beauty brands, offering basic skincare, makeup, fragrances, body care, and hair care, as well as the latest cosmetics.

# FOOD

From the must-try Hakata specialty mentaiko (spicy cod roe) to exclusive sweets available only at Hakata Hankyu and a wide variety of local Kyushu sake, our food floor offers a rich selection of Hakata souvenirs.



AMANBERRY



Satsuma Jokiya



Mon Cher Seasons



Mentaiko

SUGAR BUTTER TREE



SAKE



Itoking



Hiyoko

# Food Court "Hankyu Umaka Shokudo"

At the Food Court "Hankyu Umaka Shokudo", you can enjoy popular flavors unique to Kyushu and Osaka, highlighting local specialties.



Sushi Fujiken



Kaisendon & Tempura Hakata Kisumaru



Obama Chanpon Tetsuzo

# Hankyu Men's Osaka



## Japan's premier specialty store for men's fashion

Hankyu Men's Osaka is a specialty store for men offering the latest in fashion, from cutting-edge styles to luxury brands, including shoes, bags, accessories, cosmetics, and fragrances curated from around the world. We offer an exceptional lineup of brands and the ultimate enjoyment.



Address: 7-10, Kakuda-cho, Kita-ku, Osaka, Japan  
 Tel.: + 81 (0)6-6361-1381  
 Opening Hours: 11:00 a.m. ~ 8:00 p.m. on weekdays  
 10:00 a.m. ~ 8:00 p.m. on Saturdays, Sundays and national holidays  
 \* The hours are subject to change.

Access  
 2-minute walk from Hankyu Osaka-umeda Station, 5-minute walk from Hanshin Osaka-umeda Station, 5-minute walk from JR Osaka Station, 3-minute walk from Osaka Metro Midousuji Line Umeda Station and Osaka Metro Tanimachi Line Higashi-Umeda Station

Official Website



20 Hankyu Men's Osaka

## Selection Hankyu Men's Osaka

## LUXURY

A cutting-edge destination for men's fashion, featuring a curated collection of world-renowned international luxury brands all in one place.



## Men's BEAUTY

From skincare and makeup to fragrances. We offer a carefully curated selection of grooming essentials for men who seek refined, high-quality self-care.



BYREDO



SHISEIDO MEN



KILIAN PARIS



EDIT(h)



DECORTÉ

## EYEWEAR

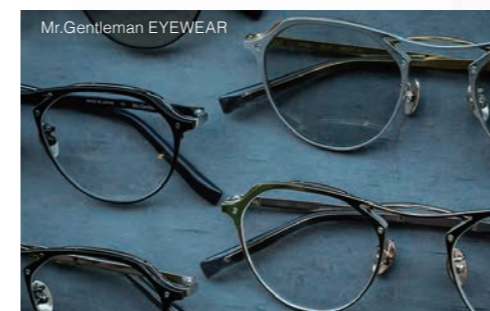
A curated selection of stylish and functional eyewear from top Japanese and international brands.



Ray-Ban



EYEVAN 7285



Mr. Gentleman EYEWEAR



MASUNAGA



10 eyevan



21, Hankyu Men's Osaka

# Hankyu Men's Tokyo



From Ginza and Marunouchi to the world—a hub of cutting-edge men's fashion.

Located in Ginza-Yurakucho, the heart of Japan's fashion and business scene, Hankyu Men's Tokyo is a specialty department store dedicated to men's fashion, offering lifestyle solutions for the style-conscious man.



Address: 2-5-1 Yuraku-cho, Chiyoda-ku, Tokyo, Japan  
 Tel.: +81 (0)3-6252-1381  
 Opening Hours: 12:00 a.m. ~ 8:00 p.m.  
 11:00 a.m. to 8:00 p.m. on Saturdays, Sundays and national holidays  
 \* The hours are subject to change.

Access  
 1-minute walk from JR Yurakucho Station, Tokyo Metro Ginza Station and Hibiya Station, 3-minute walk from Tokyo Metro Yurakucho Station

Official Website



## LUXURY FASHION

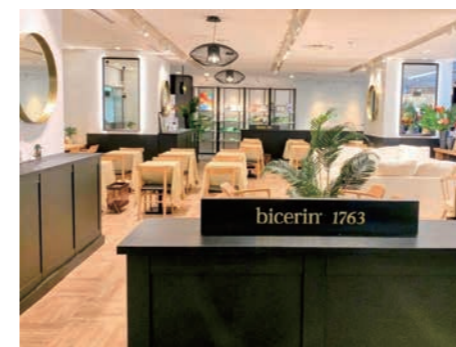
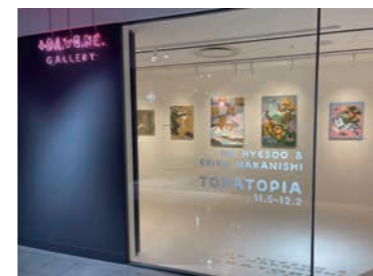
*Selection*  
 Hankyu  
 Men's Tokyo

A high-end fashion floor featuring the finest items from prestigious luxury brands.



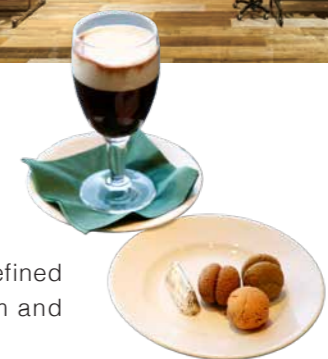
## VINTAGE & REVIVAL

We offer fashion and lifestyle items with new value that are reinterpreted by combining "authenticity" rooted in history and culture with modern elements, offering a fresh perspective on timeless style.



## Bicerin

Bicerin is a charming café offering refined meals, coffee, and sweets in a calm and elegant atmosphere.



## GINZA SNEAKER HILLS

This floor offers a wide range of sneaker-related services, including buying and selling new and pre-owned pairs, as well as historical exhibitions, repairs, remakes, and customizations.



# Hanshin Department Store Umeda Main Store



A beloved department store known across generations as “Hanshin—the Home of Food,” bringing joy and delight to everyday life.

Hanshin Umeda Main Store offers one of the most extensive food selections, alongside a wide range of lifestyle goods that enrich everyday living. As “a store that makes every day happy,” various interactive events are frequently held in the event spaces on each floor.



Address: 1-13-13 Umeda, Kita-ku, Osaka, Japan  
 Tel.: +81 (0)6-6345-1201  
 Opening Hours: 10:00 a.m. ~ 8:00 p.m.  
 \* The restaurants on B2 and 9F: 11:00 a.m. ~ 10:00 p.m.  
 \* The hours are subject to change. \* The hours may vary for some stores.

Access  
 1-minute walk from Hanshin Osaka-umeda Station, 5-minute walk from Hankyu Osaka-umeda Station, 2-minute walk from JR Osaka Station, 1-minute walk from Osaka Metro Midousuji Line Umeda Station and Osaka Metro Tanimachi Line Higashi-Umeda Station

Official Website



## FOOD

### Oyatsu Terrace

“OyatsuTerrace” offers treats from all over Japan. It’s a fun place where you can choose and buy your favorite snacks, including a wide variety of individually wrapped goodies.



Habutae Dorayaki



Poème



Edamame mochi



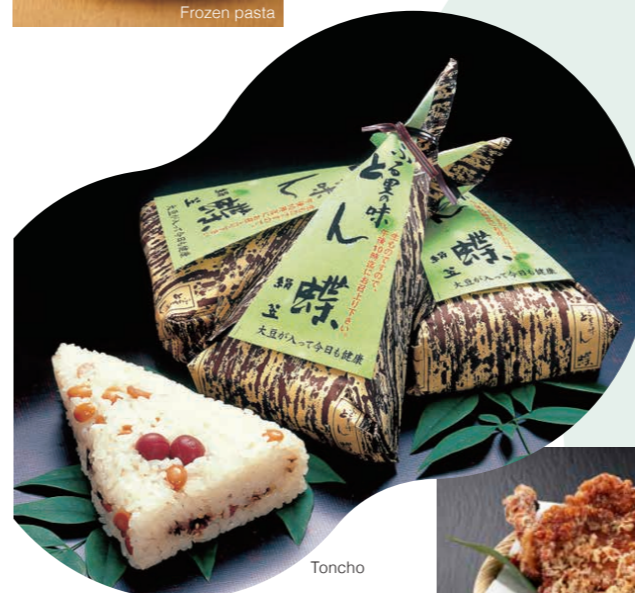
The Tosa Diary



Frozen pasta

### Umaimon Mikke

We offer a wide selection of carefully curated local gourmet foods from across Japan, including rice accompaniments, specialty seasonings, and more.



Toncho



Truffle kelp



Fried chicken skin



Sanzoku-yaki  
(Japanese-style fried chicken)



## Hanshin Bar Alley

Gathering popular or hard-to-reserve establishments, “Hanshin Bar Alley” offers a collection of stylish dining and drinking spots where you can easily hop between shops and enjoy both day and night.



Kitashinchi tonkatsu epais

La Cnchara de Donostia

## Snack Park

Experience Japan's unique stand-to-eat and stand-to-drink culture at our fast, affordable, and delicious eat-in space. You can also enjoy Osaka's specialty takoyaki and squid dishes as well.



Ganso choboyaki honpo



Tenpura no yama



Roma ken



Tamagomaru



## HANSHIN Tigers Shop

A merchandise shop for fans of the Hanshin Tigers—one of Japan's professional baseball teams. You'll find everything you need to cheer on the team—from jerseys and towels to a wide variety of essential fan gear.



## Nakagawa Masashichi Shoten

Rooted in traditional Japanese craftsmanship, this shop offers a selection of lifestyle tools, seasonal decorative items, and textile goods.



♪♪~



## Restaurant

Enjoy a variety of dining options, from traditional Japanese, Western, or Chinese cuisine served by long-established Kansai restaurants to a vibrant food court featuring famous local favorites like spice curry, kushikatsu (deep-fried skewers), and okonomiyaki (savory pancakes).



Kitashinchi Harami



RIVE GAUCHE



Tonbo agemonoten Kitashinchi again



BOTANI:CURRY



## KANEKO OPTICAL

This brand offers high-quality, Made in Japan eyewear.

